

美标截止阀

ANSI/ASME
Globe Valve

(WCB, CF8, CF8M, Ti, Ni)

科威纳 COVNA[®]
VALVE
COVNA GROUP CO., LTD

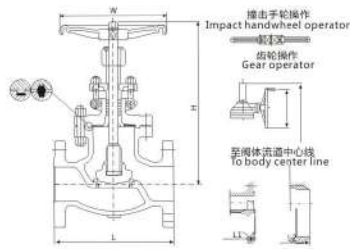


设计制造标准

设计制造: ASME B16.34, API602
结构长度: ASME B16.10
连接尺寸: ASME B16.5, ASME B16.25
检验和测试: ISO 5208, API 598

Design & Manufacture Standard

Design & Manufacture: ASME B16.34, API602
Face to Face: ASME B16.10
Connection Dimension: ASME B16.5, ASME B16.25
Inspection and Test: ISO 5208, API 598



主要连接尺寸 Main connection dimensions

J41H(Y)		Class 150															
Size	inch	1/2	3/4	1	1 1/4	1 1/2	2	2 1/2	3	4	5	6	8	10	12	14	16
L	mm	15	20	25	32	40	50	65	80	100	125	150	200	250	300	350	400
L1	mm	-	-	-	-	178	216	229	254	305	368	419	508	635	711	800	927
L2	mm	108	117	127	140	165	203	216	241	292	356	406	495	622	698	787	914
H	mm	163	193	250	250	291	350	402	465	490	455	537	707	788	820	-	-
W	mm	100	125	160	160	180	220	250	280	320	320	400	450	560	560	-	-
H1	mm	-	-	-	-	-	-	-	-	-	-	-	760	830	890	1400	1648
W1	mm	-	-	-	-	-	-	-	-	-	-	-	310	310	460	600	600
T	N.m	-	-	-	-	31	50	72	115	170	225	427	671	1127	1231	1750	-
WT(RF)	kg	6.9	9.8	13.5	19.5	28.5	21	29	34	54	72	93	185	268	400	650	1113

J41H(Y)		Class 300													
Size	inch	1/2	3/4	1	1 1/4	1 1/2	2	2 1/2	3	4	5	6	8	10	12
L	mm	15	20	25	32	40	50	65	80	100	125	150	200	250	300
L1	mm	-	-	-	-	-	178	283	308	333	371	416	460	559	622
L2	mm	108	117	127	140	165	267	292	318	356	400	445	559	622	711
H	mm	163	193	250	250	291	345	377	405	468	620	*708	*777	*935	*906
W	mm	100	125	160	160	180	220	250	280	320	400	*450	*500	*560	*600
H1	mm	-	-	-	-	-	-	-	-	-	-	836	854	997	1230
W1	mm	-	-	-	-	-	-	-	-	-	-	460	460	460	300
T	N.m	-	-	-	-	-	52	90	137	236	390	556	1003	1962	3465
WT(RF)	kg	7.7	11.3	16.8	21.2	32.6	28	36	50	75	140	200	287	510	720

日标截止阀

JIS Globe Valve

(SCP2, SC513, SC514, Ti, Ni)

科威纳 COVNA[®]
VALVE
COVNA GROUP CO., LTD

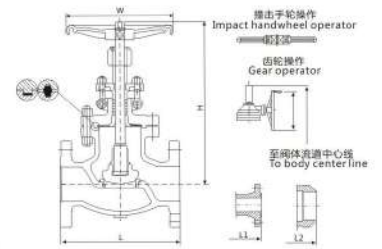


设计制造标准

产品设计: KS B2361
结构长度: KS B2361
法兰尺寸: KS B2361
检验和测试: KS B2361

Design & Manufacture Standard

Product design: KS B2361
Structure length: KS B2361
Flange size: KS B2361
Inspection and test: KS B2361



主要连接尺寸 Main connection dimensions

10K		Class 150															
Size	inch	1/2	3/4	1	1 1/4	1 1/2	2	2 1/2	3	4	5	6	8	10	12	14	16
L	mm	15	20	25	32	40	50	65	80	100	125	150	200	250	300	350	400
L1	mm	-	-	-	-	178	216	229	254	305	368	419	508	635	711	800	927
L2	mm	108	117	127	140	165	203	216	241	292	356	406	495	622	698	787	914
H	mm	163	193	250	250	291	350	362	385	490	455	537	707	788	820	-	-
W	mm	100	125	160	160	180	220	250	280	320	320	400	450	560	560	-	-
H1	mm	-	-	-	-	-	-	-	-	-	-	-	760	830	890	1400	1648
W1	mm	-	-	-	-	-	-	-	-	-	-	-	310	310	460	600	600
T	N.m	-	-	-	-	31	50	72	115	170	225	427	671	1127	1231	1750	-
WT(RF)	kg	6.9	9.8	13.5	19.5	28.5	21	29	34	54	72	93	185	268	400	650	1113

20K		Class 300													
Size	inch	1/2	3/4	1	1 1/4	1 1/2	2	2 1/2	3	4	5	6	8	10	12
L	mm	15	20	25	32	40	50	65	80	100	125	150	200	250	300
L1	mm	-	-	-	-	-	178	283	308	333	371	416	460	559	622
L2	mm	108	117	127	140	165	267	292	318	356	400	445	559	622	711
H	mm	163	193	250	250	291	345	377	405	468	620	708	777	935	906
W	mm	100	125	160	160	180	220	250	280	320	400	450	500	560	600
H1	mm	-	-	-	-	-	-	-	-	-	-	836	854	997	1230
W1	mm	-	-	-	-	-	-	-	-	-	-	460	460	460	300
T	N.m	-	-	-	-	-	52	90	137	236	390	556	1003	1962	3465
WT(RF)	kg	7.7	11.3	16.8	21.2	32.6	28	36	50	75	140	200	287	510	720

国标截止阀

GB/T Globe Valve

(WCB,CF8, CF8M,Ti,Ni)

科威纳 COVNA[®]
— VALVE —
COVNA GROUP CO.,LTD



设计制造标准

设计与制造: GB/T 12235

结构长度: GB/T 12221

法兰连接尺寸: JB/T 79

检验: JB/T 9092

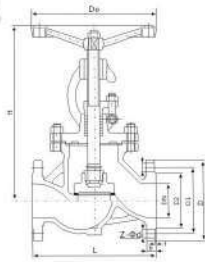
Design & Manufacture Standard

Design and Manufacture: GB/T 12235

Face to Face: GB/T 12221

End flange dimensions: JB/T 79

Test: JB/T 9092



主要连接尺寸 Main connection dimensions (PN16)

公称通径 DN(mm)	尺寸 Dimensions(mm)								
	L	D	D1	D2	b-f	Z-Ød	H	D0	
15	130	95	65	45	14-2	4-Ø14	190	100	
20	150	105	75	55	14-2	4-Ø14	200	120	
25	160	115	85	65	14-2	4-Ø14	225	140	
32	180	140/135	100	75	16-2	4-Ø18	235	160	
40	200	150/145	110	85	16-2	4-Ø18	265	200	
50	230	165/160	125	100	16-3	4-Ø18	280	220	
65	290	185/180	145	120	18-3	4-Ø18	350	240	
80	310	200/195	160	135	20-3	8-Ø18	360	280	
100	350	220/215	180	155	20-3	8-Ø18	410	320	
125	400	250/245	210	185	22-3	8-Ø18	450	350	
150	480	285/280	240	210	24-3	8-Ø23	480	400	
200	600	340/335	195	165	26-3	12-Ø23	600	450	
250	650	405	355	320	30-3	12-Ø25	720	550	
300	750	460	410	375	30-3	12-Ø25	950	650	
350	850	520	470	435	34-4	16-Ø25	1040	750	
400	950	580	525	485	36-4	16-Ø30	1150	800	
450	1050	640	585	575	40-4	20-Ø30	1250	850	
500	1150	715/705	650	608	44-4	20-Ø34	1380	950	

德标截止阀

DIN Globe Valve

(WCB,CF8, CF8M,Ti,Ni)

科威纳 COVNA[®]
— VALVE —
COVNA GROUP CO.,LTD



设计制造标准

设计与制造: DIN 3356

结构长度: DIN 3202

法兰连接尺寸: DIN 2543

检验: DIN 3230

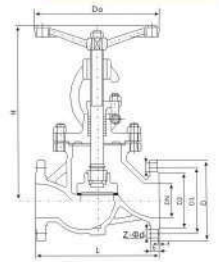
Design & Manufacture Standard

Design and Manufacture: DIN 3356

Face to Face: DIN 3202

End flange dimensions: DIN 2543

Test: DIN 3230



主要连接尺寸 Main connection dimensions (PN16)

公称通径 DN(mm)	尺寸 Dimensions(mm)								
	L	D	D1	D2	b-f	Z-Ød	H	D0	
15	130	95	65	45	14-2	4-Ø14	190	100	
20	150	105	75	55	14-2	4-Ø14	200	120	
25	160	115	85	65	14-2	4-Ø14	225	140	
32	180	135	100	78	16-2	4-Ø18	235	160	
40	200	145	110	85	16-2	4-Ø18	265	200	
50	230	160	125	100	16-3	4-Ø18	280	220	
65	290	180	145	120	18-3	4-Ø18	350	240	
80	310	195	160	135	20-3	8-Ø18	360	280	
100	350	215	180	155	20-3	8-Ø18	410	320	
125	400	245	210	185	22-3	8-Ø18	450	350	
150	480	280	140	210	24-3	8-Ø23	480	400	
200	600	335	195	165	26-3	12-Ø23	600	450	
250	730	405	355	320	30-3	12-Ø25	720	550	
300	850	460	410	375	30-3	12-Ø25	950	650	
350	980	520	470	435	34-4	16-Ø25	1040	750	
400	1100	580	525	485	36-4	16-Ø30	1150	800	
450	-	640	585	575	40-4	20-Ø30	1250	850	
500	-	705	650	608	44-4	20-Ø34	1380	950	